



Fellowes[®]

Array[®] Recess AR2

Professional recessed air purifier
H13 HEPA filtration & activated carbon

Array® Recess AR2

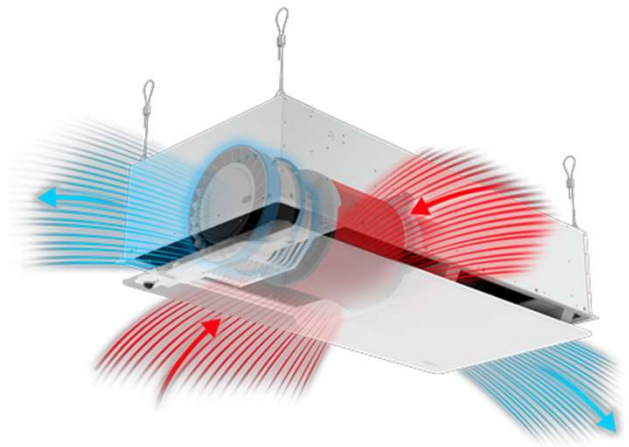
Product features :

- Purifies the air in spaces by cleaning it to make it fresh and odour-free.
- Effectively captures:
 - Inert particles, (organic, mineral, fibers, or metallic particles)
 - Biocontaminants (pollen, allergens, viruses, bacteria)
 - Gaseous pollutants (VOCs: formaldehydes, benzenes, ozone, etc.)



Product benefits:

- **Ultra quiet**, < 37 dBA during standard operation*
- Equipped with an **air pollutant detection sensor**
- **Remote control** and complete visibility of the air quality in your room thanks to the Array ViewPoint **online dashboard**
- Intelligent EnviroSmart+™ system: **adapts its speed** according to air pollution and occupancy
- **Easy installation** thanks to standard dimensions compatible with 1200 x 600 ceiling tiles.
- **Low energy consumption**, variable airflow, and automatic standby mode



*Maximum speed in silent mode (speed 3) at 3 m and Q=4.

Certifications :



Product performance :

EnviroSmart+™

Our patented technology continuously monitors air quality and adjusts our purifiers for optimal sanitation, energy efficiency and reduced costs.



The H13 HEPA filter is certified according to the EN1822 norm.



The sound level of our machines is tested according to the ISO 3741 standard.

Array® Recess AR2

Specifications :

PRODUCT SPECIFICATIONS					
Item code	5889001				
Dimensions (mm)		Height	Length	Depth	
		599	1203	323	
Weight (filters included) (kg)	33 kg				
Colour	White				
Operating modes	Quiet, Automatic, Manual (5 speeds)				
TECHNICAL DATA					
Airflow (m³/h) - (ISO 5801)	Speed 1	Speed 2	Speed 3	Speed 4	Speed 5
	249	446	607	820	1021
Max. CADR (m³/h) - AHAM		Smoke	Dust	Pollen	
		Contact us	Contact us	Contact us	
Sound power LwA (dB) - (ISO 3741-2010)*	39,2	40,2	50,5	59	75,4
Sound pressure LpA (dBA) (at 3m, Q=4)	24,7	25,7	36	44,5	60,9
Power consumption (W) - (ISO 5801)	9	11	22	43	112
Power requirements (V /Hz / A)	220-240V 50Hz 1,5A				
CERTIFICATIONS					
Electrical safety certifications	TUV, GS, CE, UL 507				
Virus testing	SARS-CoV-2 / Rhinovirus / H1N1				
Warranty	5 years				
Recyclability rate - (Directive 2012/19/EU)	84%				

* Sound power level emitted by the source in a reverberant room.



To watch the installation
tutorials,
scan the QR code:
Fellowes Air Quality
Management - YouTube



Contact us :
xxxxxxx@fellowes.com
xxxxxxx

Array® Recess AR2

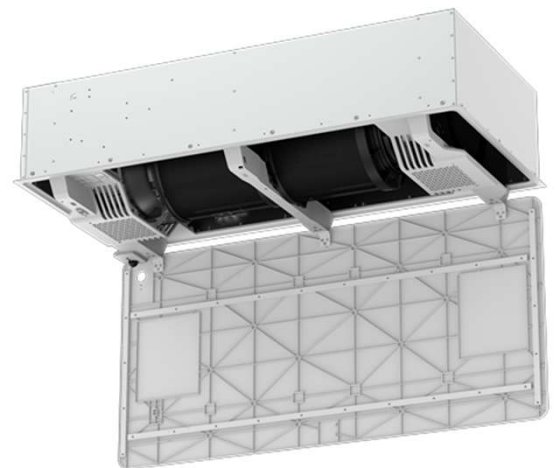
Examples of applications :



Filtration system :



	HYBRID FILTER
Filter type	3-in-1 360° (Pre-filter, Activated carbon, H13 HEPA)
Estimated filter life	12 months
Item code	5890102
Features	99.97% particles > 0.1 micron and VOC ¹ / Odours

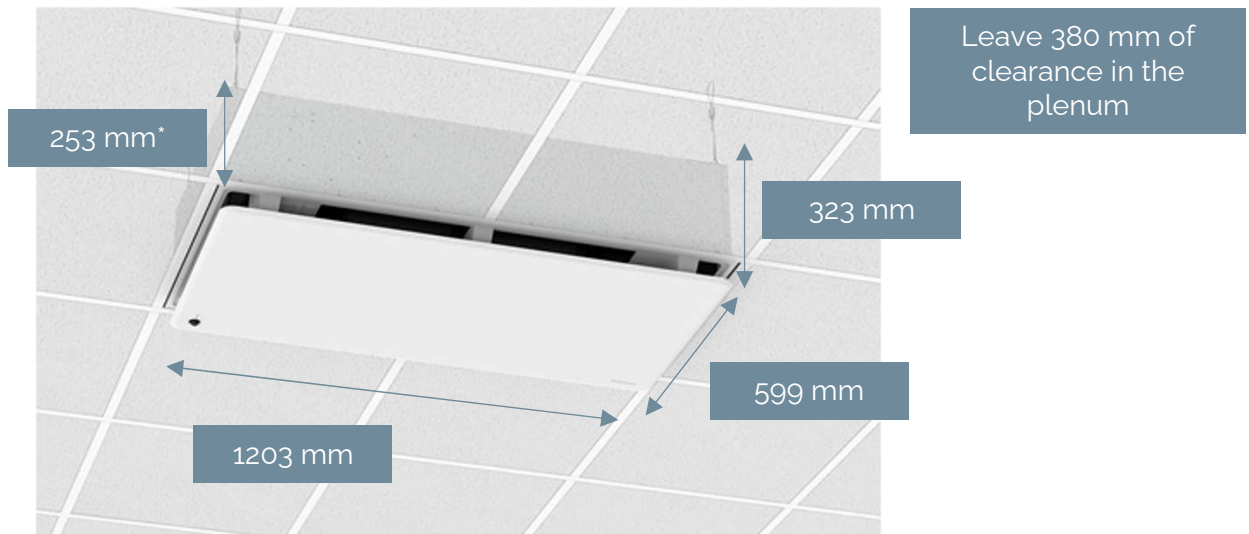


¹ The unit is initially equipped with two hybrid filters: pre-filters, activated carbon filters and H13 HEPA filters.

² Volatile Organic Compounds (VOCs) are chemical substances that evaporate easily at room temperature, contributing to air pollution. Originating from natural or man-made sources (solvents, paints, fuels, biomass), they can have toxic effects on human health.

Array® Recess AR2

Installation and operation :



*Depth of the part recessed in the ceiling.



TYPE OF INSTALLATION	<ul style="list-style-type: none">Recessed
POWER REQUIREMENTS	<ul style="list-style-type: none">220-240V 50Hz 1.5A
HARDWARE PROVIDED	<ul style="list-style-type: none">Aircraft cables, 2.5mm thick with spring loaded hookCable clutches for 2.5mm thick cableSpring loaded hooks attaches to unit, cable goes up and through your building attachmentCentering blocks
CLEARANCE	<ul style="list-style-type: none">Leave 380 mm of clearance in the plenum

Quiet mode :

The unit adapts its airflow based on the air pollution detected in its operating area, not exceeding the maximum speed of 3.

The unit automatically switches to standby.

Automatic Mode :

The unit automatically adapts its airflow based on the air pollution detected in its operating area and can reach a maximum speed of 5.

The unit automatically switches to standby.

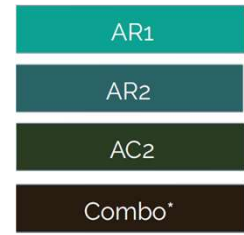
Manual Mode :

The unit maintains a constant airflow set manually by the user, between speed 1 and 5 depending on the user's needs.

The unit does not shut down automatically.

Array® Recess AR2

Sizing tables:



Low density areas: 3 Volumes/hour
> 10m² / occupant

Ceiling height (m)	Area coverage (m²)	10	15	20	25	30	35	40	45	50	60	70	80	90	100	110	120
2.5	Minimum recommended airflow in m³/h	75	113	150	188	225	263	300	338	375	450	525	600	675	750	825	900
2.6		78	117	156	195	234	273	312	351	390	468	546	624	702	780	858	936
2.8		84	126	168	210	252	294	336	378	420	504	588	672	756	840	924	1008
3		90	135	180	225	270	315	360	405	450	540	630	720	810	900	990	1080
4		120	180	240	300	360	420	480	540	600	720	840	960	1080	1200	1320	1440
4m to 6m		180	270	360	450	540	630	720	810	900	1080						

Medium density areas: 4 Volumes/hour
5 to 10m² / occupant

Ceiling height (m)	Area coverage (m²)	10	15	20	25	30	35	40	45	50	60	70	80	90	100	110	120
2.5	Minimum recommended airflow in m³/h	100	150	200	250	300	350	400	450	500	600	700	800	900	1000	1100	1200
2.6		104	156	208	260	312	364	416	468	520	624	728	832	936	1040	1144	1248
2.8		112	168	224	280	336	392	448	504	560	672	784	896	1008	1120	1232	1344
3		120	180	240	300	360	420	480	540	600	720	840	960	1080	1200	1320	1440
4		160	240	320	400	480	560	640	720	800	960	1120	1280	1440	1600	1760	1920
4m to 6m		240	360	480	600	720	840	960	1080	1200							

High density areas: 5 Volumes/hour
< 5m² / occupant

Ceiling height (m)	Area coverage (m²)	10	15	20	25	30	35	40	45	50	60	70	80	90	100	110	120
2.5	Minimum recommended airflow in m³/h	125	188	250	313	375	438	500	563	625	750	875	1000	1125	1250	1375	1500
2.6		130	195	260	325	390	455	520	585	650	780	910	1040	1170	1300	1430	1560
2.8		140	210	280	350	420	490	560	630	700	840	980	1120	1260	1400	1540	1680
3		150	225	300	375	450	525	600	675	750	900	1050	1200	1350	1500	1650	1800
4		200	300	400	500	600	700	800	900	1000	1200	1400	1600	1800	2000	2200	2400
4m to 6m		300	450	600	750	900	1050	1200									

*Combination of several units, depending on the airflow required. It is perfectly possible to combine ceiling and wall units. It is always possible to divide each zone into several separate areas.

- The treated space is considered to be correctly ventilated, in accordance with the air renewal rates specified by regulations.
- Do not position a unit less than 3m away from an exhaust opening.
- Wall-mounted units can be combined with recessed and ceiling-mounted units for uniform treatment of large spaces.
- It's always possible to split each zone into several separate areas.
- For any other dimensions, please contact us